



FAMILY HANDBOOK

Index

What is Camplify?	2
Why should my child join Camplify?	2
What can I expect from Camplify?	3
What will Camplify expect from me?	3
Program Reference	4
Weekend Camps (4th - 5th, 8th)	4
Weeklong Camps (rising 6th - 9th)	4
What can I do to prepare my child for camp?	5
Pathmakers (6th - 8th)	5
LEAD (9th - 12th)	5
WNC Camp Scholarships (5th - 12th)	6
General FAQs	7

Contact us:

Camplify Office: 828-697-2000

Executive Director, Kristin Dunn: kristin@camplifync.org

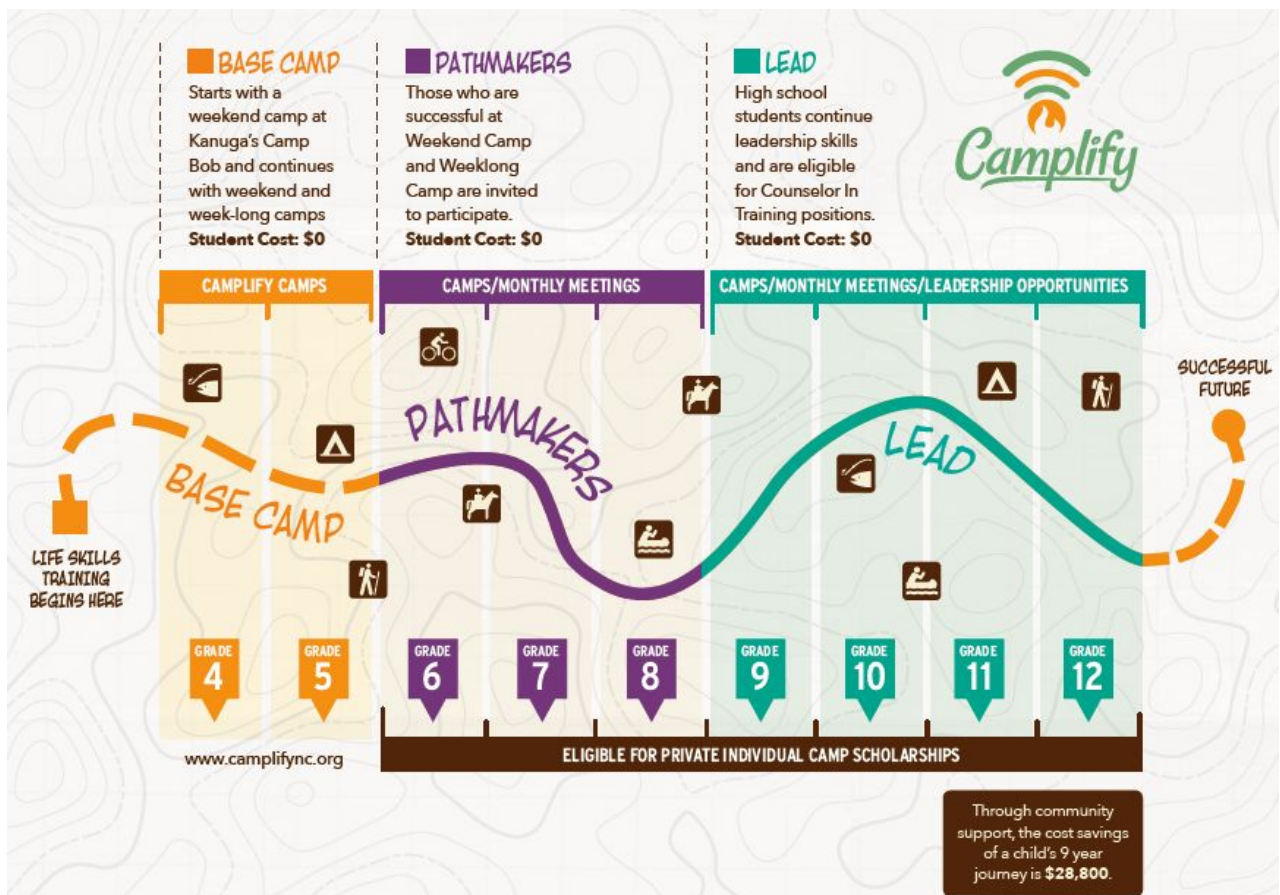
Program Coordinator, Kate Rhodes: kate@camplifync.org

Physical Address: 204 Kanuga Rd., Hendersonville, NC 28739

Mailing Address: P.O. Box 751, Hendersonville, NC 28793

What is Camplify?

Camplify provides a series of camp-based and experiential learning programs to teach nominated students in WNC the life skills required to become young leaders. Camplify accepts nominations of 4th grade students from elementary school counselors, as well as The Boys & Girls Club, and looks for nominees who show leadership potential, who may not otherwise have the opportunity to attend camp, and whose families will commit to this nine-year journey for their child. Participants are nominated in the spring of 4th grade for our first program: Spring Weekend Camp. Those who do well are invited back to two Camplify Weekend Camps in the 5th grade, followed by Camplify Weeklong Summer Camp (rising 6th-9th grade), scholarships at partner WNC summer camps (5th-12th grade), and a school-year leadership development program that meets monthly through high school graduation (6th-12th grade).



Why should my child join Camplify?

Camp experiences are statistically proven to teach social skills, promote staying physically active, encourage respect of nature, and foster self-confidence. According to our families, 100% of parents reported that, after camp, their child was more responsible. 94% agreed that their camper was more confident, adaptable, and collaborative.

What can I expect from Camplify?

By committing to Camplify's nine year leadership journey, your child will receive:

- Opportunity to attend 4 weekend camps, free of charge
- Opportunity to attend 4 weeklong camps for as little as \$20
- Opportunity to be considered for scholarship at partner camps valued up to \$8,000
- Year-round monthly leadership development programs during 6th-12th grade
- Access up to \$28,000 worth of leadership experience for little to no cost to you

Why families are staying...

"My children are getting to experience something amazing that we would never be able to afford for them to do. The program is helping to form them into well rounded responsible young adults. We are grateful for the opportunity."



"We have stayed with Camplify because of the growth of my daughter's emotional, maturity in tackling new challenges through the program. The other reason is the compassion that Kristen and Emily and the other volunteers pour into the program."



Scope of Work Update

Research & Key Findings

Next Steps



What will Camplify expect from me?

By committing to Camplify, you are expected to:

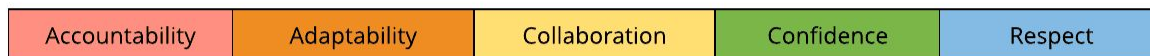
- Turn in all paperwork and forms in a timely manner
- RSVP to all programs and events
- Enroll your student in all camping and year-round experiences, as able.
- Contact Camplify staff with any questions or concerns you may have
- Request to join our Camplify Families Facebook group to receive updates on upcoming events: <https://www.facebook.com/groups/camplifyfamilies/>

Once nominated for Camplify, young leaders and their families are welcome to attend Camp Night, where they can learn about what to expect at weekend camp and all opportunities offered as part of our nine year leadership program. The Camplify staff and your school counselor are here to support and guide your family towards a successful first camp experience.

Program Reference

School Grade	Opportunities
4th	Spring Weekend Camp
5th	Weekend Camp (Fall and Spring), Weeklong Camp, Eligible for WNC Camp Scholarship
6th	Pathmakers, Weeklong Camp, Eligible for WNC Camp Scholarship
7th	Pathmakers, Weeklong Camp, Eligible for WNC Camp Scholarship
8th	Pathmakers, Fall Wilderness Weekend, Weeklong Camp, Eligible for WNC Camp Scholarship
9th	LEAD, Eligible for WNC Camp Scholarship, Counselor in Training (Spring)
10th-12th	LEAD, Eligible for WNC Camp Scholarship, Counselor in Training (Fall and Spring)

Residential Camps



At our overnight programs, campers focus on developing these five leadership competencies.

Weekend Camps (4th - 5th, 8th)

The first three camping experiences in the Camplify program are our Camplify Weekend Camps, hosted at Camp Bob at Kanuga. These occur in the spring of 4th grade, fall of 5th grade, and the spring of 5th grade. These camps run from Friday afternoon to Sunday afternoon, for a total of two nights. At weekend camps, campers will start to think about who they want to be as a leader, laying the groundwork for our nine year program. In the 8th grade, campers will have the opportunity to return to Camp Bob for Wilderness Weekend, where they will be camping, backpacking, and orienteering. These camps are free of charge.

Weeklong Camps (rising 6th - 9th)

Camplify's Weeklong Camp is hosted annually in August at a rotating partner camp. Summer 2020 is hosted by Camp Pinnacle. During this camp, Camplify invites rising 6th-9th graders for a five day camp experience. Families can choose what they pay for Weeklong Camp: \$20, \$35, or \$65. If you have questions about payment, or payment is keeping from enrolling your child, please call the Camplify office and we'll work with you to get your child to camp.

What can I do to prepare my child for camp?

For some of you, this may be the first night your child spends away from home. We understand how this can cause anxiety, for both our campers and their families. In order to have the best camp experience possible, here are five ways that you can prepare your child for camp and prevent homesickness:

- Let your child help pack for camp, so s/he can remember where needful items like their toothbrush or soap are. This also helps young campers think critically about what they need (i.e. a raincoat for rainy weather, a sweater for when it's cold).
- Try not to tell your camper that you'll pick them up if they don't like camp. This can prevent them from really giving camp a try, and may increase their homesickness.
- Talk about camp as opening day approaches. Start a countdown. Help your child get excited about the fun of being a camper!
- Be honest with your child about how fun camp is, but don't ignore that camp can be challenging.
- Stop by our office or give us a call! We are happy to answer any questions you might have as camp approaches.

School-Year Leadership Development

Pathmakers (6th - 8th)



Once campers are in middle school, they are eligible to participate in our school-year monthly programming. This is an excellent opportunity for students to build their leadership skills, participate in service opportunities in the community, and have fun with their fellow Camplify students! We explore these leadership skills through the development of four core competencies: communicative, self-starter, growth-minded, and culturally-inclusive. Pathmakers meet one Saturday each month from 9:30 AM - 11:30 AM at a rotating location September through April. Camplify participants are expected to participate in Pathmakers in order to be considered for WNC camp scholarship opportunities and Camplify Weeklong Camp.

LEAD (9th-12th)



As high schoolers, campers are exemplary leaders in the Camplify community. In addition to monthly meetings, LEAD students help facilitate Pathmakers, volunteer at Camplify events, and serve as Counselors in Training at weekend camps. LEAD students are expected to communicate directly with Camplify staff and help guide their own curriculum. The service and skills they practice in LEAD are incredible additions to any college or job application, and Camplify staff are always happy to write recommendation letters.

WNC Camp Scholarships

What are WNC camp scholarships? (5th - 12th)

Camplify is incredibly fortunate to be located in Western North Carolina, the camping capital of the United States. Due to the generosity of our 24 partner camps, Camplify is able to gift camp scholarships to many of our most committed participants. In 2020, over 65 students received camp scholarships! **Note: These are regular camp sessions at our partner camps, and are NOT run by the Camplify team.**

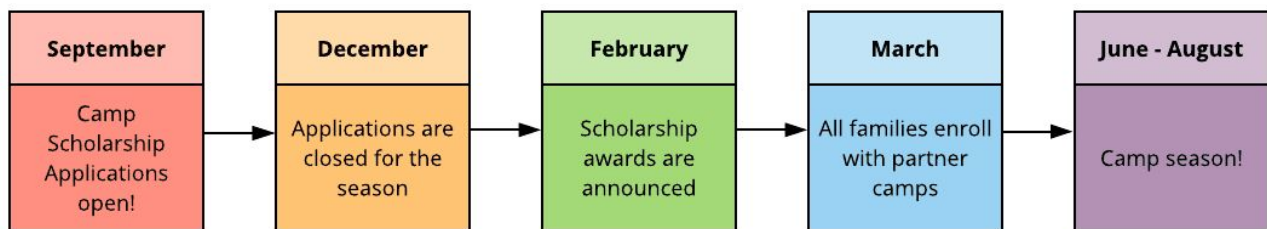
How are WNC camp scholarships different from other Camplify camps?

During a Camplify camp (weekend camps, weeklong camp), Camplify creates all of the curriculum. These camps are for Camplify participants only, and are led by Camplify staff. When a camper is selected for an individual camp scholarship, they have been chosen to represent Camplify at one of our partner camps, who operate independently from Camplify. Think of Camplify as a matchmaker: partner camps want to give scholarships to local youth, so they ask Camplify to send them the best of the best! Camplify's job is to connect you with the best camp for your camper and support your enrollment and preparation for your awarded session.

How do I apply for a camp scholarship?

In September, camp scholarship applications are made available to students in grades 6-12, and a select number of 5th grade students *may* be considered based on past camp performance. Students in grades 6-12 are required to turn in an application to be considered for camp scholarship. This includes:

- A complete application
- A copy of the student's most recent grades
- A recommendation letter from a teacher, school counselor, or similar adult



Applications are due by mid-December, and scholarship awards will be announced after the new year. Once the camper and their family are notified of their award, they are required to enroll their child within 30 days directly through the partner camp's enrollment process (*Camplify cannot enroll your camper for you!*). Young leaders are selected for camp scholarships based on a number of factors including participation in year-round programming, grades and recommendations, and history of camp experience. Due to the large number of applications we receive, not every child will receive camp scholarship with a partner camp the first year that they apply. However, those not selected for camp scholarship will be given registration priority for Camplify Weeklong Camp.

General FAQs:

Why do we only accept nominations in the 4th grade?

Camplify nominates students in the 4th grade to start on a nine year, progressive leadership development program. Each camp or program builds on previous curriculum, allowing students to graduate from our program as fantastic leaders in their community.

I have another child who wasn't nominated for the program. Can they join the program too?

Camplify nominations are decided by school counselors, not Camplify staff. We understand that it can be frustrating when one of your children is nominated and the other is not. Unfortunately, we do not have the infrastructure to support any nominations after the 4th grade. If you are interested in a nomination for a younger child, please express interest to your school counselor when the child is in 4th grade.

How do I communicate with my child at camp?

While your child is at an overnight camp (weeklong camp, scholarship camps, etc), the only way to drop a line to your child is through good old fashioned letter writing! Campers are not permitted to bring cell phones or any form of technology to camp. Camplify will always provide an on-call or office number in case of an emergency.

Do campers have to participate in school-year programs?

Yes. We expect our young leaders to attend as many Pathmakers or LEAD meetings as possible. If they do not participate in the school-year programming, your camper may not be considered for camp scholarships or Weeklong Camp. Your camper was chosen for this program because their school counselor believes in them and wants them to take advantage of as many opportunities as possible.

Are camp scholarships from partner camps completely free?

Every camp is different! The majority of camps do not require any financial contribution from the family, apart from camp store budget. A few camps charge up to \$50/week. If you are awarded a scholarship that requires a fee, you will be notified in advance.

Who are our camp scholarship partners?

We are so lucky to have so many partner camps who support Camplify's mission of providing camp experience for local youth in Western North Carolina. As of 2020, we have partnerships with:

Camp Lutheridge
Camp Lurecrest
Camp Mondamin,
Camp Ton-a-Wandah
Falling Creek Camp
Camp Pinnacle
Appalachian Institute for
Creative Learning

Camp Tekoa
Camp Merrie-Woode
Camp Wayfarer
Blue Star Camps
Camp Highlander
Camp Timberlake
Camp Greystone
Camp Watia
Camp Kanuga

Bonclarken
Green River Preserve
Camp Glen Arden
Camp Green Cove
Camp Arrowhead
Camp Greenville
Talisman Camps
RYLA

